

SAILING INSTRUCTIONS

WESTERN AUSTRALIAN MINNOW CHAMPIONSHIPS

14th & 15th of MARCH 2020

Conducted by the The Cruising Yacht Club (TCYC) Inc. in conjunction with the
Minnow Class Association of WA



Minnow Sailing Association
Western Australia



**The Cruising Yacht Club
of Western Australia (inc)**



ROTARY CLUB OF
ROCKINGHAM
Western Australia



The Organising Authority is The Cruising Yacht Club of W.A. (Inc.) (TCYC) in conjunction with the
Minnow Association of WA (MAWA)

SAILING INSTRUCTIONS

[DP] denotes a rule for which the penalty is at the discretion of the protest committee, which may be less than disqualification.

[NP] denotes that a breach of this rule will not be grounds for a protest by a boat.

[SP] denotes a rule for which a standard penalty may be applied by the race committee without a hearing

1 RULES

1.1 The regatta will be governed by the 'rules' as defined in The Racing Rules of Sailing(RRS).

1.2 Appendix T – Arbitration shall apply.

1.3 Novice Fleet

1.3.1 The Novice Fleet will be governed by the World Sailing Introductory Rules of Sailing. (refer to Attachment C)

1.3.2 The Novice fleet is to encourage participation and enjoyment of the State Championships for the inexperienced sailors. It is expected that sailors skilled enough to sail in the Open fleet shall do so to maintain the spirit of the Novice fleet.

1.3.3 Final acceptance into the Novice fleet will be made by the State Presidents Western Australia (or their nominated representatives) in conjunction with the RC chairman. Refer to the MAWA website for the *Minnow Novice Fleet Guidelines*.

Web link: http://websites.sportstg.com/assoc_page.cgi?c=1-10025-0-0-0&slD=331794

1.3.4 Novice Fleet shall wear a yellow bib (supplied by the organising authority and must be returned) to indicate they are participating in the novice division.

1.3.5 Coaching is allowed on the Novice course by official coach boats appointed by the Western Australian Minnow Class Association Committee.

2 NOTICES TO COMPETITORS

2.1 Notices to competitors will be posted on the official sailing notice board located at TCYC.

3 CHANGES TO SAILING INSTRUCTIONS

3.1 Any change to the sailing instructions will be posted no later than 45 Minutes before the start time of any race it will affect, except that any change to the schedule of races will be posted by 1800 on the day before it will take effect.

4 SIGNALS MADE ASHORE

- 4.1 Signals made ashore will be displayed at the flag mast located in front of TCYC.
- 4.2 When flag AP is displayed ashore, '1 minute' is replaced with 'not less than 20 minutes' in the race signal AP.
- 4.3 Flag D with one sound means 'The warning signal will be made not less than 20 minutes after flag D is displayed. Boats shall not leave the beach until this signal made. [DP]
- 4.4 When a fleet flag is displayed, the instruction will refer to that fleet only.

5 SCHEDULE OF RACES

- 5.1 **Open Fleet:** there is up to twelve Championship Races planned.
- 5.2 **Novice Fleet:** there is up to twelve Championship Races planned
- 5.3 The schedule of race sessions will be as follows:

Date	Event / Race	Time of Event, or Warning Signal	Proposed Type of Race
Saturday 14 March 2020	Late Entry, Registration & Measurement	0730–0830	
	Competitor's Meeting	0830	
	First Race Warning Session 1	0930	Racing
	First Race Warning Session 2	1420	Racing
	Welcome Night	1800	Dinner
Sunday 15 March 2020	First Race Warning Session 1	0830	Racing
	First Race Warning Session 2	1230	Racing
	Presentation	1500	

- 5.4 It is not expected that more than 6 races will be sailed on any day.
- 5.5 For back to back racing the Warning Signal for the next race in the session will be made as soon as possible after the finish of the preceding race.
- 5.6 On the 15th of March, no warning signal will be made after 1345.

6 CLASS FLAGS

- 6.1 Open Fleet class flag will be a black minnow emblem on a blue background.
- 6.2 Novice Fleet class flag will be a blue minnow emblem on a white background.

7 RACING AREAS

- 7.1 The racing area will be on the waters of Mangles Bay adjacent to the TCYC clubhouse.
- 7.2 Open and Novice Fleets will race on same courses with same start and finish lines. See Attachment B for approximate locations.

8 THE COURSES

- 8.1 Courses are detailed in Attachment A.
- 8.2 No later than the warning signal, the race committee will display the approximate compass bearing of the first leg.
- 8.3 Courses for each fleet will be designated at or before the warning signal by displaying the International numeral pennant, or the number on a course board. Course signals are shown on SI Attachment A.

9 MARKS

- 9.1 **Open and Novice Fleet**, Marks 1, 2, 3 will be orange cylindrical buoys.
- 9.2 The starting and finishing pin end marks will be a white float with an orange flag.
- 9.3 New marks, as provided in SI 11 will be:
 - 9.3.1 **Open and Novice Course**: orange cylindrical buoys with black and white skirt.

10 THE START

- 10.1 Races will be started by using RRS 26.
- 10.2 The start line will be between a staff displaying an orange flag on the Signal Boat at the starboard end and a pin buoy displaying an orange flag at the port-end.
- 10.3 A boat starting later than 4 minutes after her starting signal will be scored Did Not Start without a hearing. This changes RRS A4 & A5.
- 10.4 To alert competitors and coaches that the next race sequence will commence, the orange flag will be displayed with a long sound signal. The flag will be raised at least five minutes before the warning signal is displayed.

11 CHANGE OF THE NEXT LEG OF THE COURSE

- 11.1 To change the next leg of the course, the race committee will lay a new mark (or move the finishing line) as described below and remove the original mark as soon as practicable. When in a subsequent change a new mark is replaced, it will be replaced by an original mark.

12 THE FINISH

12.1 The finish line will be between a staff displaying an orange flag on the Signal Boat at the starboard end and a pin buoy displaying an orange flag at the port end.

13 PENALTY SYSTEM

13.1 For Open Fleet Rule 44.1 shall apply.

13.2 Appendix T - Arbitration shall apply.

14 TIME LIMITS

14.1 The Time limit for each race will be 70 minutes.

14.2 Boats failing to finish within 30 minutes after the first boat sails the course and finishes will be scored Did Not Finish without a hearing. This changes RRS 35, A4, A5.

15 RETIREMENT and OUTSIDE ASSISTANCE: [DP] [NP]

15.1 Any boat retiring from a race shall, where possible, notify an official race committee vessel prior to returning to shore. Should a boat be unable to notify a race committee vessel they shall advise the Race Office immediately on returning ashore, sign off and complete the Retirement Form within the protest time limit.

15.2 A boat receiving outside assistance shall report that assistance to the Race Office and complete the Outside Assistance Form within the protest time limit.

16 PROTESTS AND REQUESTS FOR REDRESS

This section (SI 16) does not apply to the Novice Fleet, as protests are not allowed.

16.1 Protest forms are available at the sign on/sign off desk at TCYC.

16.2 Protests and requests for redress shall be delivered to the Race Office within the protest time limit.

16.3 The protest time limit is 45 minutes after the last boat has finished the last race of the session in which the protest occurred.

16.4 Notices will be posted no later than 30 minutes after the protest time limit to inform competitors of hearings in which they are parties. Hearings will be held in the TCYC Race Office, or at another venue posted with the protest time, beginning at the time posted.

16.5 Notices of protests by the race committee or protest committee will be posted to inform boats under RRS 61.1(b).

16.6 On the last scheduled day of racing a request for redress based on a protest committee decision shall be delivered no later than 30 minutes after the decision was posted. This changes RRS 62.2.

16.7 Breaches of SI's marked (NP) will not be grounds for protest by a boat. This changes RRS 60.1(a).

17 SCORING

- 17.1 The low point scoring system of RRS Appendix A will apply.
- 17.2 Four races are required to be completed to constitute a series.
- 17.3 When fewer than 6 races have been completed, a boat's series score will be the total of her race scores.
- 17.4 When 6 or 7 races have been completed, a boat's series score will be the total of her race scores excluding her worst score.
- 17.5 When 8 or more races have been completed, a boats series score will be the total of her race scores excluding her two worst scores.

18 SAFETY REGULATIONS, SIGNING ON & SIGNING OFF [NP]

18.1 Sign On[SP]

All competitors must personally sign on prior to commencement of each race session. The sign on board will be located at the desk under the veranda of TCYC. The competitor shall provide the Beach Marshall with their name and sail number and ensure their are signed on before they go on the water.

18.2 Sign Off [SP]

After each race session all competitors must sign off no later than 40 minutes from the finishing time of the last boat of the session. The competitor shall provide the Beach Marshall with their name and sail number and ensure their they are signed off.

- 18.3 Competitors retiring from or failing to start or finish in any race shall sign off as soon as possible after returning to the beach by reporting to the Beach Marshall and also complete the declaration "DNF" or "DNS" on the sheet provided.
- 18.4 Competitors who do not intend to race in the first race of any session but do intend to race in any subsequent races in that session must advise the Regatta Office that they wish to sign on for the subsequent race/s of that session only.
- 18.5 Boats failing to comply with SI 18.1 and 18.2 will be subject to a scoring penalty of 5 points for each indiscretion to be applied to the race closest to each indiscretion without a hearing. This changes RRS 63.1, A4 and A5.
- 18.6 Competitors shall comply with any reasonable request from a race management official.

19 REPLACEMENT OF EQUIPMENT [DP]

- 19.1 Substitution of damaged or lost equipment will not be allowed unless authorised by the Race Committee. Requests for substitution shall be made in writing to the Race Committee at the first reasonable opportunity.

20 EQUIPMENT AND MEASUREMENT CHECKS [DP]

- 20.1 Measurements will be carried out as per the schedule. A boat or its equipment may be inspected at any time for compliance with the class rules and sailing instructions. On the water, a boat may be instructed by a Race Committee equipment inspector or measurer to proceed immediately to a designated area for inspection.

21 OFFICIAL BOATS

21.1 The Signal Boat will be marked with a TCYC Club Burgee. All other Official boats will be marked with a green and white support flag.

22 SUPPORT BOATS [DP][NP]

22.1 This SI does not apply to the Novice Fleet.

22.2 Team leaders, coaches and other support personnel shall stay outside of the restricted racing area (unless requested by the race committee) from the time of the preparatory signal until all boats have finished, retired or the Race Committee signals a postponement or abandonment. The race committee will protest any support boat infringing in the racing area.

22.3 The restricted race area is defined as the area bounded by the area 100m outside the course marks and 100m clear of any boats racing.

23 RADIO COMMUNICATION [DP][NP]

23.1 Except in an emergency a boat that is racing shall not make voice or data transmissions that is not available to all boats. This restriction also applies to mobile telephones.

24 PRIZES

24.1 **Open Fleet** - The overall winner of the Open Fleet will be awarded the Western Australian Minnow Champion Perpetual Trophy. Prizes will be awarded to the top three overall place getters of the Open Fleet.

24.2 **Junior Fleet** - Prizes will be awarded to the first three place getters of the Junior Fleet.

24.3 **Novice Fleet** -The overall winner of the Novice Fleet will be awarded the Western Australian Minnow Champion Perpetual Trophy Prizes will be awarded to the top three overall place getters of the Novice Fleet.

24.4 Additional prizes may be awarded at the discretion of the Minnow Association of WA.

25 DISCLAIMER OF LIABILITY

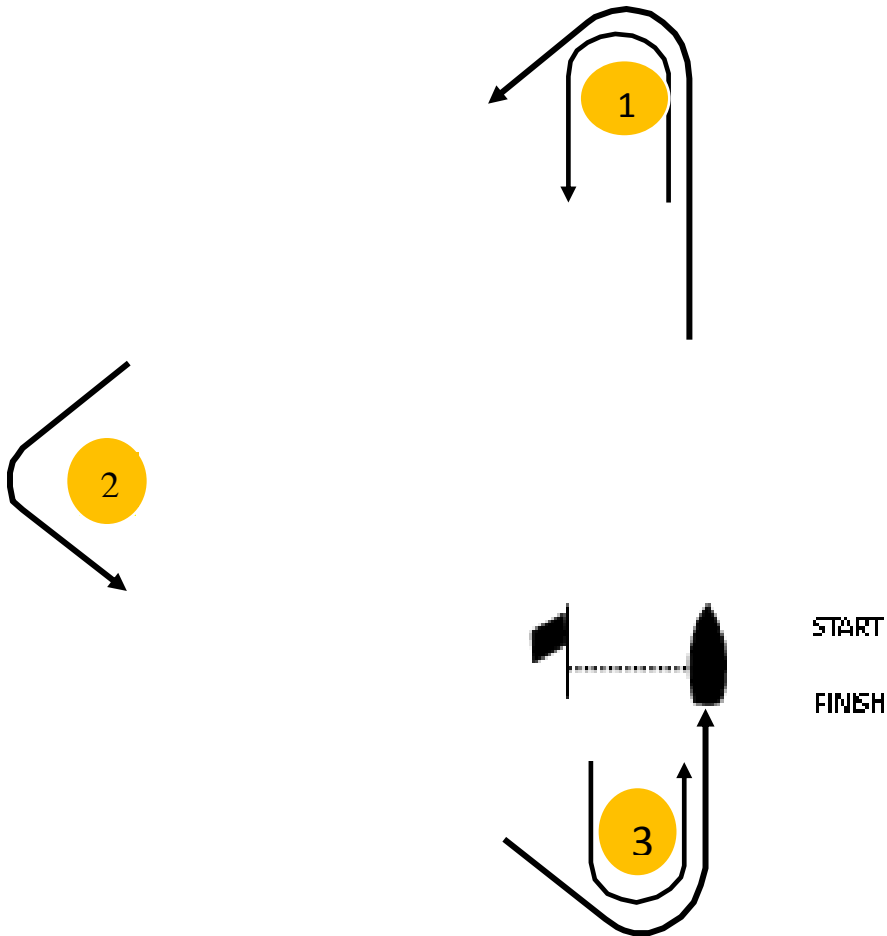
25.1 Competitors participate in the regatta entirely at their own risk. See rule 4, Decision to Race. The organizing authority, its associates and appointees will not accept any liability for material damage or personal injury or death or inconvenience sustained in conjunction with or prior to, during, or after the regatta.

26 INSURANCE

26.1 Each participating boat shall be insured with valid third-party liability insurance with a minimum cover of \$10,000,000 per incident or the equivalent. By signing the entry form, guardians are deemed to have made a declaration that the boat has such cover.



Attachment A – Courses



All marks to be rounded to port

Course 1 will be indicated by **International Numeral Pennant 1**.



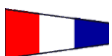
Start-1-2-3-Finish

Course 2 will be indicated by **International Numeral Pennant 2**.



Start-1-2-3-1-3-Finish

Course 3 will be indicated by **International Numeral Pennant 3**



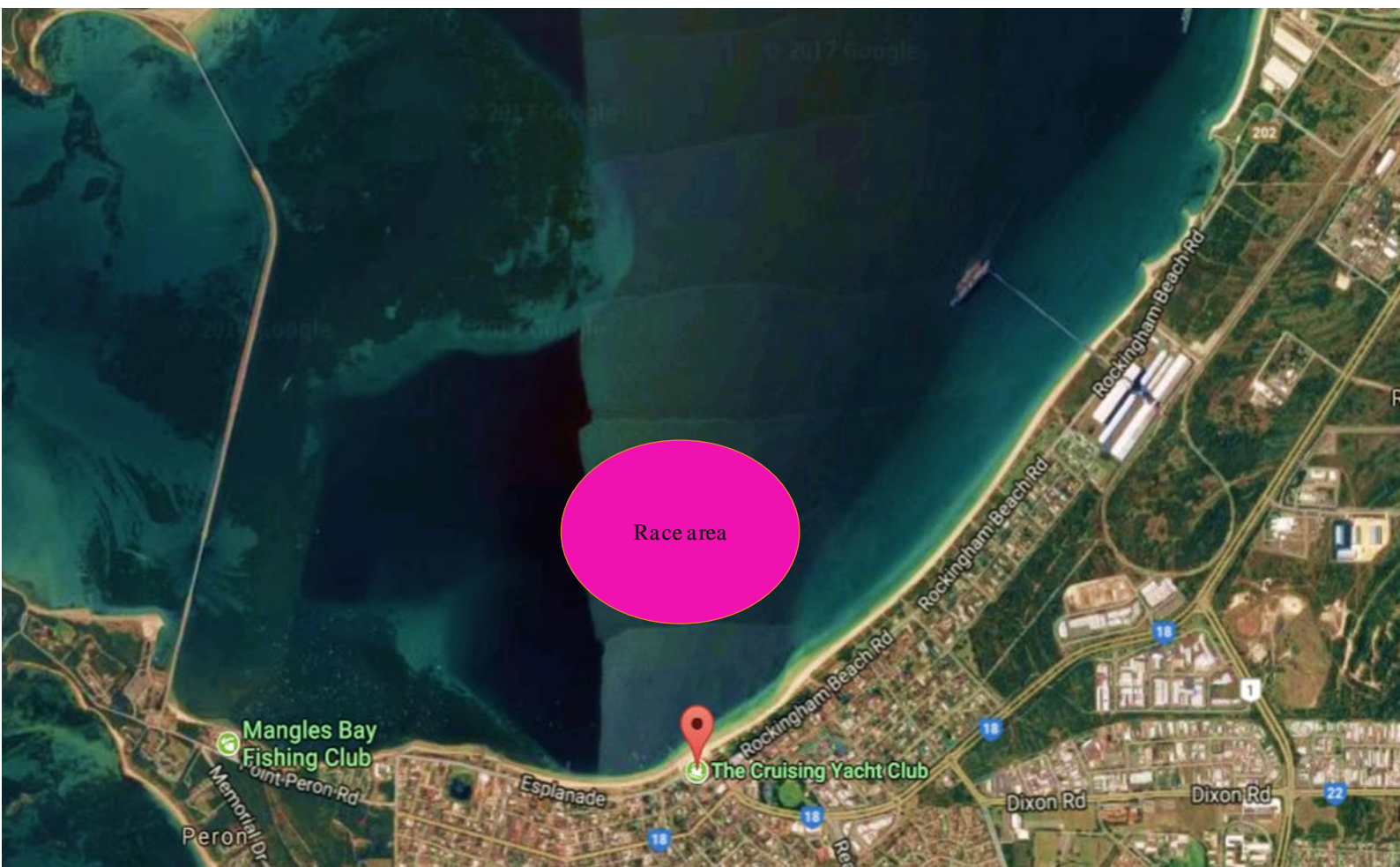
Start-1-2-3-1-3-1-2-3-Finish

Course 4 will be indicated by **International Numeral Pennant 4**



Start-1-2-3-1-3-1-2-3-1-3-Finish

Attachment B – Racing Areas



**The Cruising Yacht Club
2 Val St Rockingham WA**



Attachment C

Introductory Rules for Racing

Version 1.01 - February 2008



Some Explanations

Windward and Leeward: The *leeward* side of your boat is the side where your mainsail lies. The *windward* side is the other side.

Port and Starboard tack: You are on *port* or *starboard tack* according to your *windward* side.

Advisor: A person appointed by the race organizers to assist competitors in understanding the rules and, when appropriate, to penalize a boat.

Basic Rules

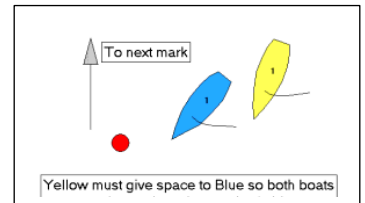
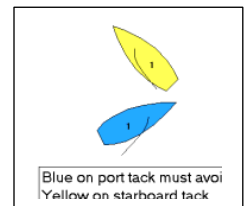
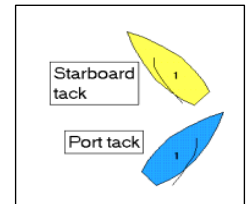
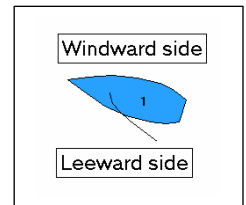
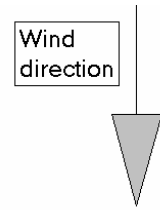
1. You must comply with the principles of good sportsmanship.
2. You must try not to collide with another boat.

Rules When Boats Meet

3. When you and the other boat are on opposite *tacks*, if you are on *port tack* you must avoid the boat on *starboard tack*.
4. When you and the other boat are on the same *tack*, you must avoid the other boat
 - (a) if she is in front of you, or
 - (b) if she is on your *leeward* side.
5. After starting, when you and the other boat approach a mark or an object that both boats need to avoid, and the other boat is between you and the mark or other object, you must give her sufficient space to pass it safely on the same side. However, when the boats are on opposite tacks at a windward mark, this rule does not apply.
6. When the other boat is required to avoid you, if you change course, you must give the other boat an adequate opportunity to avoid you.

Other Rules

7. At the starting signal you must be behind the starting line.
8. After the starting signal, you must sail the course described by the race organizers.
9. You must not touch a mark of the course.
10. If you think you or another boat has broken a rule or if you are unclear about the rules at any time during the race, you must describe the incident to the *advisor* after the race. The *advisor* may then add two points to the score of any boat that has broken a rule. If the offence is serious, the *advisor* may add extra points to the boat's score.



Responsibilities of Race Organizers

- (a) To run fair, enjoyable and safe races.
 - (b) To inform all the competitors about the sequence of starting signals, the starting and finishing lines, the course to be sailed and the marks to be rounded.
 - (c) To score each boat points equal to her finishing position, after adjusting for handicaps when appropriate.
 - (d) To appoint an *advisor* on the rules and procedures for racing.
-

Introduction and Use

These rules are designed to stand on their own so that sailors who are starting to race can compete using only these few rules and without the need to learn the many details of the ISAF Racing Rules of Sailing (RRS). They are appropriate for small boats in sheltered waters; they are not intended for boats over 6 metres (20 feet) long when an experienced person should be alongside and able to instruct the novice helm. These rules are compatible with the principles and fundamental rules in the RRS. However, they are neither a guide to nor an abbreviated form of the RRS.

The rules are intentionally minimalist and they omit as many complications of the RRS as possible. They are written for sailors who are starting to race and with no more than 2 years of racing experience. After this period these sailors should be encouraged to sail races under the Racing Rules of Sailing.

Boats racing under these rules should race on their own course and should not share the course area or marks with boats racing under the RRS.

Unlike normal racing, there is an obligation on the race organisers to verbally brief all competitors about the marks, the course and all relevant race management matters.

The role of rules advisor is a vital part of teaching the rules. Ideally the rules advisor should be afloat and should watch the racing but, as a minimum, the advisor must be available for discussion immediately the sailors return ashore. The rules advisor may be the same person as the race officer.

The standard penalty for breaking a rule is necessarily small at this learning stage and the difficulties of penalty turns are avoided. As it is only the advisor that imposes a penalty, possible pressure on a less confident competitor while racing is avoided. Note this two place penalty applies to all errors (including starting and course errors) although there is provision for increasing the penalty to avoid any advantage being gained from the error.

Feedback

These rules are 'experimental'. Please let ISAF have your comments, criticisms and suggestions at www.sailing.org/contactisaf. The rules will be updated as required and the latest version published on the ISAF website www.sailing.org.