

THE CRUISING YACHT CLUB OF WA (INC.)  
**CATALPA CLASSIC**

**SAILING INSTRUCTIONS**

**Saturday 27<sup>th</sup> November 2021**

**1. RULES**

- 1.1 Races will be governed by the rules as defined in the Racing Rules of Sailing.
- 1.2 Boats complying in all respects with their particular class rules may race, either as a class or in a mixed fleet, wholly within the rules of that class unless otherwise prescribed in these Sailing Instructions.
- 1.3 Each participating boat shall be insured with valid 3<sup>rd</sup> party liability insurance with a minimum cover of \$10M for any one incident. By taking part in a race or event, owners are deemed to have made a declaration that they have such cover.
- 1.4 Appendix T – Arbitration shall apply

**2. ENTRIES AND ELIGIBILITY**

- 2.1 To be eligible for points placing, all boats will be of a mono-hull design and conform to Category 6 as defined by AS Special Regulations Part 1
- 2.2 All boats shall be on the boat register of a member club and have submitted a current club Safety Declaration to their division or class representative prior to the start time, except that any visiting boat may participate in races with prior permission of the Race Committee.
- 2.3 All boats shall prominently display their respective division or class flag as prescribed in Sailing Instruction 7.1 or as posted by the Race Committee on the Sailing Notice Board except that boats competing in single class fleets or mixed class fleets may instead display their class emblem or insignia on their mainsail.

**3. SIGN ON AND NOMINATION**

- 3.1 The Person in Charge or a delegate shall **clearly print** and complete all fields on the Sign On form not less than 1 hour before the warning time of the race.
- 3.2 If the Person in Charge is not the designated Helmsperson, the name of the Helmsperson shall also be **clearly printed** on the Sign On Sheet.
- 3.3 TCYC Boats shall be Fenians and start with the Green fleet. They Sign on the Green Sign On sheet and collect a Green Flag at the Sign On Desk
- 3.4 FSC Boats shall be the WA Authorities and start with the Red fleet. They Sign on the Red Sign On sheet and collect a red Flag at the Sign On Desk
- 3.5 All competing boats shall sign on with FSC Race Control by Radio on VHF 72

#### **4. NOTICES TO COMPETITORS**

- 4.1 Notices to competitors will be posted on the official Sailing Notice Board located in the northeast corner of the ground floor lounge.

#### **5. CHANGES IN SAILING INSTRUCTIONS**

- 5.1 Any changes to the Sailing Instructions will be posted at least 60 minutes before the start of the race.

#### **6. SIGNALS MADE ASHORE**

- 6.1 Signals made ashore will be displayed at TCYC flagstaff in the front lawn area.

#### **7. DIVISION AND CLASS FLAGS**

- 7.1 Boats should fly their usual flag as per their current division at their member club as follows:

**Division 0 - Naval Numeral Number 0**

**Division 1 - Naval Numeral Number 1**

**Division 2 - Naval Numeral Number 2**

**Division 3 - Naval Numeral Number 3**

**Division 4 - Naval Numeral Number 4**

**Division 5 - Naval Numeral Number 5**

**Division 6 - Naval Numeral Number 6**

**You will pick up either a Green or Red flag at the sign on desk.  
Your colour will be designated on the Sign on sheet. The Red  
and Green have different start times as per clause 10**

Green Flag      Fenians  
Red Flag        WA Authorities

#### **8. RACING COURSE**

- 8.1 **A.** Start Line as per 11.2
- B.** Leave Southern Flats Eastern Cardinal Marker to port
- C.** Leave FSC Mark "H" to Starboard, (32° 06.700'S 115°42.250'E)
- D.** Leave FSC Mark "S" to Starboard, (32° 05.127'S 115°41.800'E)
- E.** Leave FSC Mark "W" to Starboard, (32° 04.000'S 115° 41.600'E)
- F.** Finish Line at FSC Mark "L" (32° 03.800S 115° 43.500 E)
- G.** The course may be shortened at any FSC Race mark to ensure a result.

## 9. COMMERCIAL SHIPPING

9.1 Particular care shall be exercised in the following areas:

- (a) At the entrance to Fremantle Harbour
- (b) At the Southern Entrance to and in the Cockburn Sound Channel

9.2 Penalty

If the Fremantle Ports lodge a formal complaint with YWA, TCYC or FSC that a boat has failed to keep clear, the race committee shall lodge a protest. RRS 61 is amended such that a hearing shall be conducted. The penalty for such an infringement is disqualification.

9.3 Damaging a Mark

Any boat damaging a Fremantle Ports or DPI mark shall notify race control immediately and may be responsible for the cost of its repair.

## 10. SCHEDULE OF RACES

Green Flag	Fenians	Warning Signal 1355
Red Flag	WA Authorities	Warning Signal 1410

## 11. THE START

11.1 The Fenians will start first and be pursued by WA Authorities after the Fenians start as per the Schedule of Races Clause 10

11.2 The approximate location of the Start Boat will be displayed on the Notice Board as a "Notice to Competitors" at least 60 minutes before the start of the race.

11.3 The start line shall be an imaginary line between an Orange flag displayed on the staff of the Race Committee boat and the port end Starting Mark.

11.4 A clearance buoy may be attached by a line from the Race Committee Vessel and must be left to Starboard. The penalty for hitting this buoy is in accordance with R.R.S Rule 31.

11.5 A boat whose warning signal has not been made shall avoid the starting area during the starting sequence for preceding races.

11.6 A boat starting later than 5 minutes after her starting signal will be scored DNS without a hearing. This changes rules A4 and A5.

## 12. ABANDONMENT/ POSTPONEMENT of a race due to strong winds

12.1 Strong winds – on days of strong winds the following procedures will be carried out to determine whether a race is to be postponed or abandoned.

12.2 Prior to leaving the jetty the Race Committee shall check the wind speed using an appropriate anemometer. Should the reading average over 25 knots over a 1-minute interval, the race will be postponed or abandoned, and the appropriate flags flown from the flagstaff on the lawn area.

12.3 Prior to raising the "On Station" flag the wind speed will be checked on the start boat whilst positioned at or near the start line. Should the recording average over 25 knots over a 1-minute interval the race will be postponed or abandoned, and the appropriate flags flown from the start boat. Flags may also be flown from the flagstaff on the lawn area.

### **13. TIME LIMIT**

- 13.1 The time limit for all divisions is 1800 hrs. Boats finishing after this time will be scored DNF. This changes Rules 35, A4 and A5

### **14. PROTESTS**

- 14.1 Protests shall be submitted to a TCYC race official no later than 1 hour after the finish of the last boat.
- 14.2 If 1<sup>st</sup> or fastest places in a race might be affected by a protest, pennants will not be presented until after the protest has been decided.

### **15. PRIZES**

- 15.1 Interpretation of the terms for which prizes are awarded is by the Sailing Committee (SC) whose decision is final. Handicaps to be used will be based on a boat's latest club handicap with a moderating factor based on past performance, aimed at normalising the different divisions. Allowance will be made for the different starting times.
- 15.2 The overall winner will be the boat with the lowest corrected time.

### **16. RADIO COMMUNICATION**

- 16.1 The Race committee will use VHF Radio Channel 72 to advise competitors of matters relating to the conduct of racing. It is recommended that boats competing in keelboat racing carry a VHF radio on board and maintain a listening watch whilst racing.
- 16.2 FSC Race Control will be conduct the race on VHF channel 72.
- 16.3 While racing, a boat shall neither make radio transmissions nor receive radio communications not available to other boats, except in an emergency.

### **17 SAFETY**

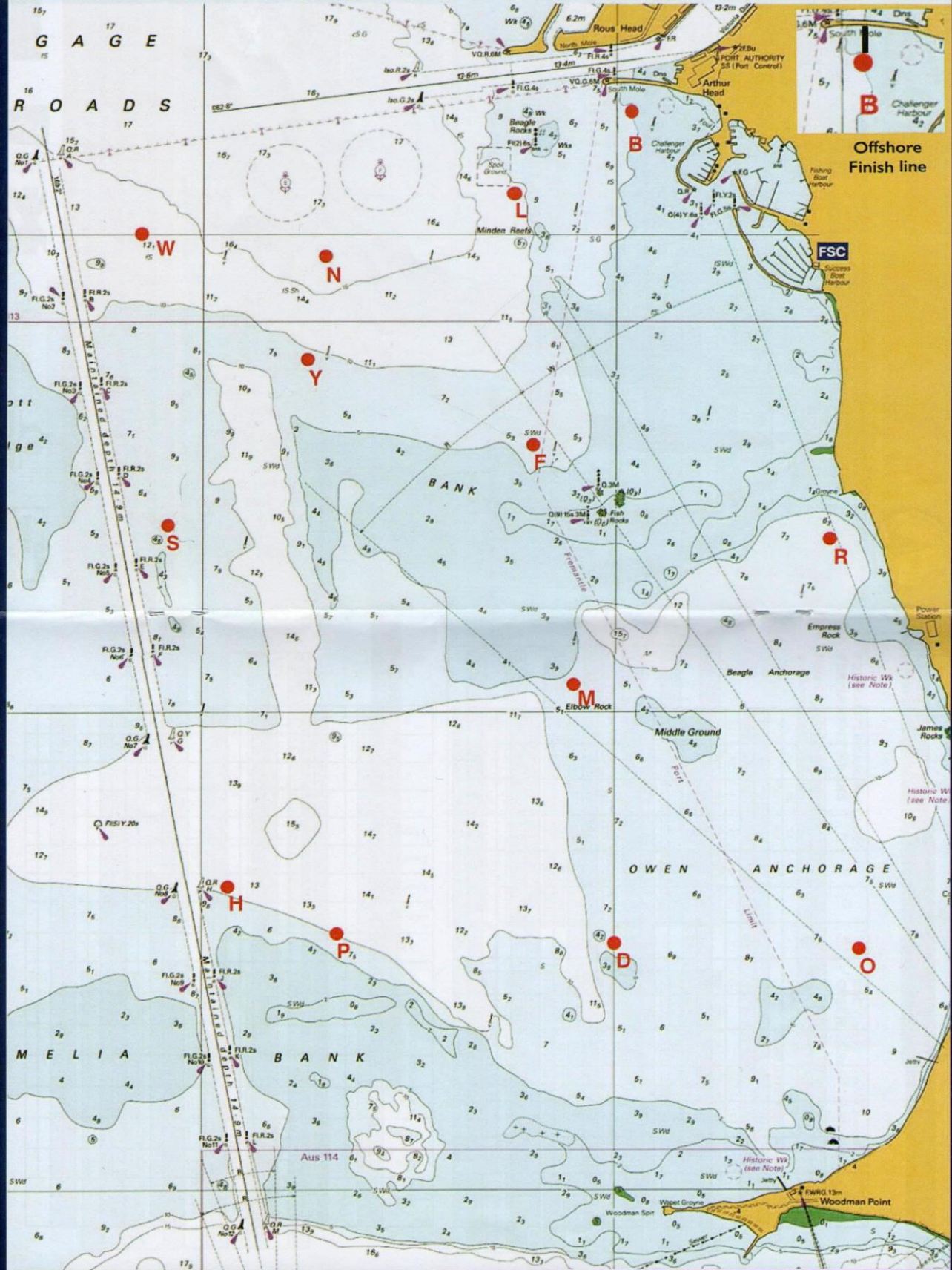
- 17.1 Note that this is a Category 6 event and competing boats must be holders of a current Category 6 Safety Declaration. Department of Transport regulations must be observed, and boats must carry an EPIRB.

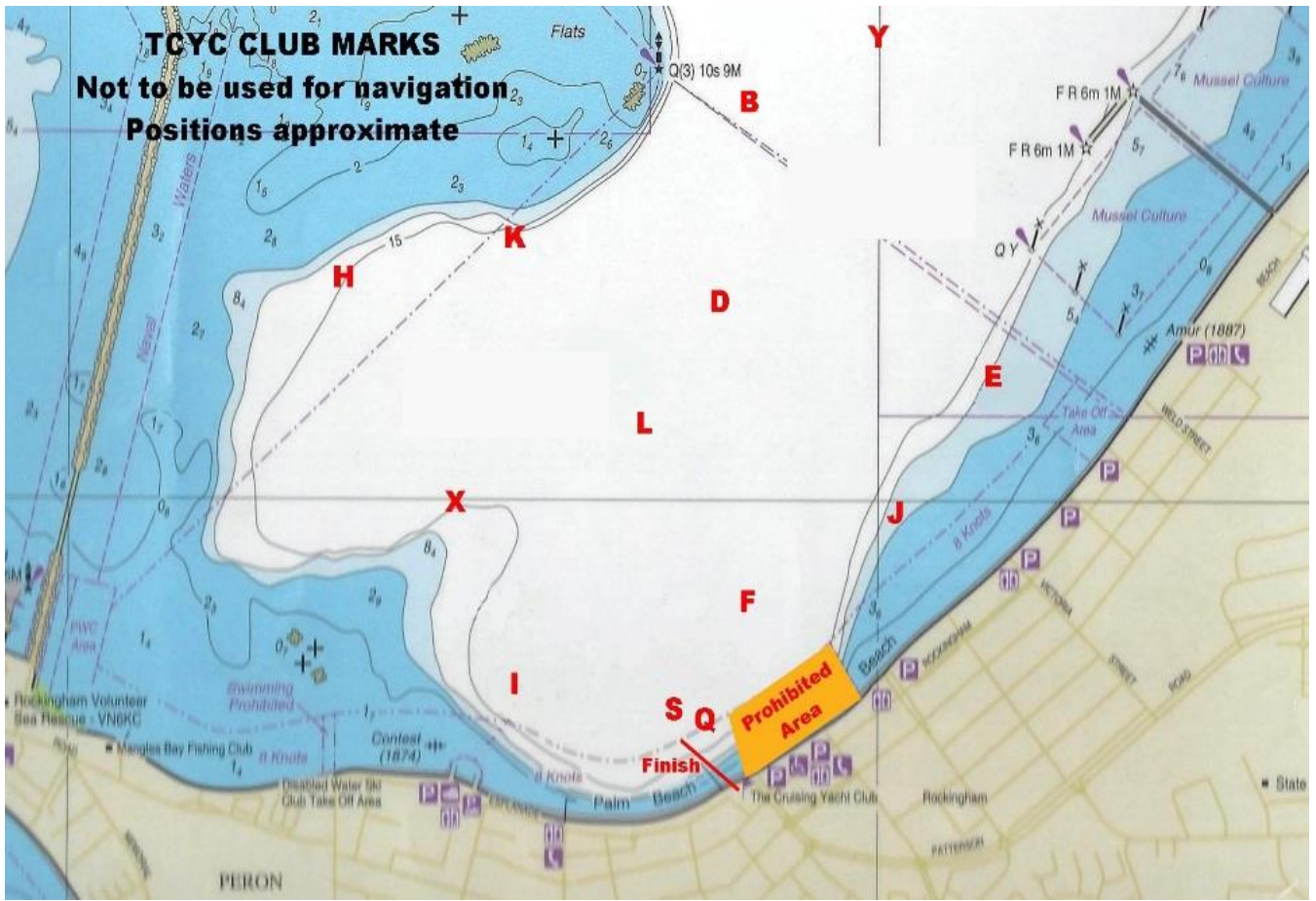
Remember to log off if you retire.

TCYC Radio contact	FSC Race Control VHF 72
TCYC Emergency contact	0401 006 093
TCYC Clubhouse	9527 5468
Rockingham Sea Rescue	VN6KC VHF 16
Water Police	9442 8600
Rockingham Police	9528 8000

# BUOY POSITIONS - Not to be used for Navigation

Extract of AUS 117 used with permission of the Australian Hydrographic Service - Copyright Commonwealth of Australia.  
For more information about charts visit [www.hydro.gov.au](http://www.hydro.gov.au) **Note** - Banks and Depths are correct as at time of map production and are subject to variation.





No	Posted Date	Description of Amendment
1	18-Nov-19	Clause 11.1 Changed from 11.1 <del>Combined Start—All fleets start together. The Start Boat will display a White Flag as the warning signal for all divisions to start together</del> To 11.1 The Fenians will start first and be pursued by WA Authorities after the Fenians start as per the Schedule of Races Clause 10