

WAXIT Multihull Grand Prix 2024

SAILING INSTRUCTIONS

Saturday 23rd & Sunday 24th March 2024

Organising Authority: The Cruising Yacht Club of WA Inc. (TCYC)

2 Val Street, Rockingham WA 6969

The notation **'[DP]'** in a rule in the SI means that the penalty for a breach of that rule may, at the discretion of the protest committee, be less than disqualification.

The notation **'[NP]'** in a rule in this notice of race means that the rule is not subject to protest by a competitor.

The notation **'[SP]'** in a rule in the SI means the Race Committee (RC) may apply a standard penalty (SP) without a hearing.

1. [NP] COVID-19 REGULATIONS

- 1.1. The racing will be conducted in accordance with Federal & State legislation relating to COVID-19.
- 1.2. All competitors who submit the online Entry Form are deemed to have acknowledged they are responsible for deciding whether to participate or not, and will comply with all applicable rules and regulations, including all COVID regulations as required by TCYC

2. RULES

- 2.1. The Regatta will be governed by the rules as defined in The Racing Rules of Sailing.
- 2.2. RRS 44.1 is changed so that the Two-Turns Penalty is replaced by the One-Turn Penalty.
- 2.3. If there is a conflict between the Sailing Instructions and the Notice of Race, the Sailing Instructions shall prevail, this changes RRS 63.7
- 2.4. The Prescriptions and Special Regulations Part 2 Off the Beach Boats will of Australian Sailing will apply. It will be the responsibility of all competitors to ensure that personal flotation devices comply with a standard equivalent to those listed in AS special Regulations 5.01 Personal Floatation Devices

3. NOTICES TO COMPETITORS

- 3.1. Notices to competitors will be posted on the official notice board located at the clubhouse.

4. CHANGES TO SAILING INSTRUCTIONS

- 4.1. Any change to the sailing instructions will be posted at least one hour before the first race on the day it will take effect, except that any change to the schedule of races will be posted by 1800 on the day before it will take effect.

5. SIGNALS MADE ASHORE

- 5.1. Signals made ashore will be displayed on the flagpole in front of the clubhouse.
- 5.2. When flag AP is displayed ashore, '1 minute' is replaced with 'not less than 30 minutes' in race signal AP.
- 5.3. When flag D is displayed ashore, boats shall not leave the beach. No warning signal will be made until at least 30 minutes after removal.

6. SCHEDULE OF RACES

6.1.

Day/Date	Event	Time
Saturday 23 rd Mar	Registration Competitors briefing Racing Sessions 1	1000 – 1200 1215 1 st warning signal not before 1340
Sunday 24 th Mar	Racing Sessions 2 & 3 Boats will return to shore between sessions.	1 st warning signal not before 0930

- 6.2. There will be a maximum of 5 races per day and a maximum of 8 races over the entire series.
- 6.3. There will be no warning signal made after 1500 on Sunday 24th March 2024 unless it follows a general recall.

7. CLASS FLAGS

- 7.1. The class flags will be designated at registration.

8. RACING AREA

- 8.1. Attachment A shows the location of the racing area.

9. THE COURSES

- 9.1. The diagram in Attachment B show the courses, including the approximate angle between legs, the order in which marks are to be passed, and the side on which each mark is to be left.

10. MARKS

- 10.1. Marks 1, 2S & 2P will be Orange inflatable buoys.
- 10.2. Mark 1A will be a Red cylindrical buoy.

11. [DP] AREAS THAT ARE OBSTRUCTIONS

- 11.1 Attachment A - Obstructions. All the waters bounded by lines commencing on the foreshore at the southern end of the bandstand at the foot of Railway Terrace (approx. 32°16.512'S, 115°43.677'E) then extending in line to 32°16.409's, 115°43.635'E; then approx. 470 meters north easterly along a line parallel to and 200 meters from the foreshore to 32°16.280's, 115°43.891 'E; then south easterly to the foreshore (approx. 32°16.367'S, 115°43.956'E.
- 11.2 **[NP] [SP]** Boats entering the obstruction, exclusion zones shall incur a two-point penalty without a hearing.

12. THE START

- 12.1. Races will be started by using RRS 26 with the warning signal made 5 minutes before the starting signal.
- 12.2. The starting line will be between the orange flag displayed on the race committee vessel at the starboard end and the starting mark at the port end.
- 12.3. A clearance mark may be streamed from the start boat. This clearance mark is deemed to be part of the start boat for the purpose of RRS 31 and shall be passed on the same side as the start boat when starting.
- 12.4. A boat that does not start within 5 minutes after her starting signal will be scored Did Not Start without a hearing. This changes RRS A4 and A5.

13. THE FINISH

- 13.1. See attachment B. The finishing line will be between the blue flag displayed on the race committee vessel and the blue flag on the finishing mark.

14. TIME LIMITS

- 14.1. The finishing time limit for the first boat in each race shall be no longer than 45 minutes.
- 14.2. Boats failing to finish within 35 minutes after the first boat sails the course and finishes will be scored Did Not Finish without a hearing. This changes RRS 35, A4 and A5.

15. PROTESTS AND REQUEST FOR REDRESS

- 15.1. Protest forms are available at the race office. Protests and requests for redress or reopening shall be delivered there within the appropriate time limit.
- 15.2. The protest time limit is 60 minutes after the last boat has finished the last race of the session or the race committee signals no more racing for the session, whichever is later.
- 15.3. Notices will be posted no later than 60 minutes after the protest time limit to inform competitors of hearings in which they are parties or named as witnesses. Hearings will be held in the protest room located in the clubhouse beginning at the time posted.
- 15.4. Notices of protest by the race committee, technical committee or protest committee will be posted to inform boats under RRS 61.1(b).
- 15.5. On the last scheduled day of racing a request for redress based on a protest committee decision shall be delivered no later than 30 minutes after the decision was posted. This changes RRS 62.2.

16. SCORING

- 16.1. One (1) Race is required to be completed to constitute a series.
- 16.2. When fewer than four (4) races have been completed, a boats series score will be the total of her race scores.
- 16.3. When four (4) to eight (8) races have been completed, a boats series score will be the total of her race scores excluding her worst score.
- 16.4. Scores will be calculated using the Australian Sailing - OTB Cat Yardsticks.
- 16.5. The Low point system of Appendix A will apply.

17. [DP] SAFETY REGULATIONS

- 17.1. **[SP] Sign-on / Sign-off:**
Competitors will be required to Sign-on before going on the water and Sign-off when coming ashore, using the Sign-on / Sign-off sheet situated by the club noticeboard. Sign-on will be open one hour before the first scheduled warning signal of the session or when AP is removed if displayed ashore. Failure to sign-on/sign-off will incur a one-point penalty without a hearing.

17.2. Competitors shall wear personal flotation devices at all times while afloat, except briefly while changing or adjusting clothing or personal equipment.

17.3. A boat that retires from a race shall notify the race committee soon as possible.

18. [NP][DP] REPLACEMENT OF CREW OR EQUIPMENT

18.1. Substitution of competitors will not be allowed without prior written approval of the race committee. Requests for substitution shall be made to the committee on forms available at the race office.

18.2. Substitution of damaged or lost equipment will not be allowed unless authorised by the race committee. Requests for substitution shall be made to the committee at the first reasonable opportunity on forms available at the race office.

19. [NP][DP] SUPPORT BOATS

19.1. Coaches/support boats shall always make themselves available while afloat to assist the race committee in the case of an emergency or rescue, as directed in person by the relevant race officer or via VHF radio.

19.2. Unless directed by the race committee, team leaders, coaches and other support persons shall stay outside areas where boats are racing from the time of the preparatory signal for the first fleet to start until all boats have finished or retired or the race committee signals a postponement, general recall or abandonment.

20. [NP][DP] TRASH DISPOSAL

20.1. Trash may be placed aboard support or official boats.

21. [NP][DP] RADIO AND MOBILE PHONE COMMUNICATION

21.1. Except in an emergency, a boat that is racing shall not make voice or data transmissions and shall not receive voice or data communication that is not available to all boats.

22. [NP]PRIZES

23.1. Prizes will be presented as follows.

First overall

Second overall

Third overall

23.2. The Organising Authority may award more prizes at their discretion.

23. RISK STATEMENT AND DISCLAIMER OF LIABILITY

23.1. Competitors participate in the regatta entirely at their own risk. RRS 3 states: 'The responsibility for a boat's decision to participate in a race or to continue to race is hers alone.' By participating in this event each competitor agrees and acknowledges that sailing is a potentially dangerous activity with inherent risks. These risks include strong winds and rough seas, sudden changes in weather, failure of equipment, boat handling errors, poor seamanship by other boats, loss of balance on an unstable platform and fatigue resulting in increased risk of injury. **Inherent in the sport of sailing is the risk of permanent, catastrophic injury or death by drowning, trauma, hypothermia or other cause.**

23.2. Competitors participate in the race entirely at their own risk. The organising authority, its officers, members, servants, agents and volunteers will not accept any liability for material damage or personal injury, or death sustained in conjunction with or prior to, during, or after the race

24.3. The organising authority, at their absolute discretion, always reserve the right to:

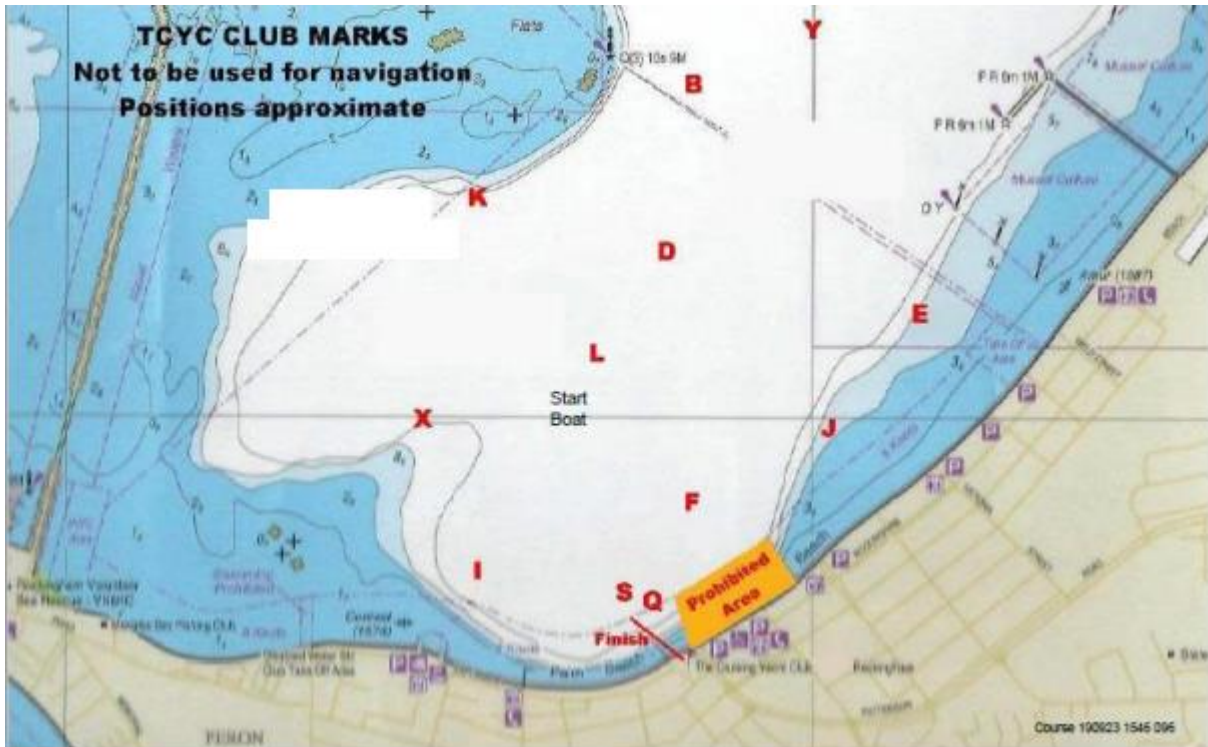
- a. prevent any participant from participating in the Event if, at any time, they reasonably believe that the participant poses a safety risk to themselves or others, or for any other reason, including but not limited to, acting in a manner which is likely to bring the organising authority into disrepute, or is likely to cause harm to participants, the organising authority's officers, members, servants, agents volunteers, or any other third party.
- b. change the format of the series for any reason including but not limited to weather, number of entries, time constraints or any unforeseen incidents.
- c. Cancel the series if the conditions are deemed dangerous or not suitable for the racing to start or continue

25. INSURANCE

- 25.1. Each participating boat shall be insured with valid third-party liability insurance with a minimum cover of AUD \$10 million.
- 25.2. All competitors who submit the online entry form are deemed to have made a declaration that they hold such cover.

Attachment A – RACING AREA & AREAS THAT ARE OBSTRUCTIONS

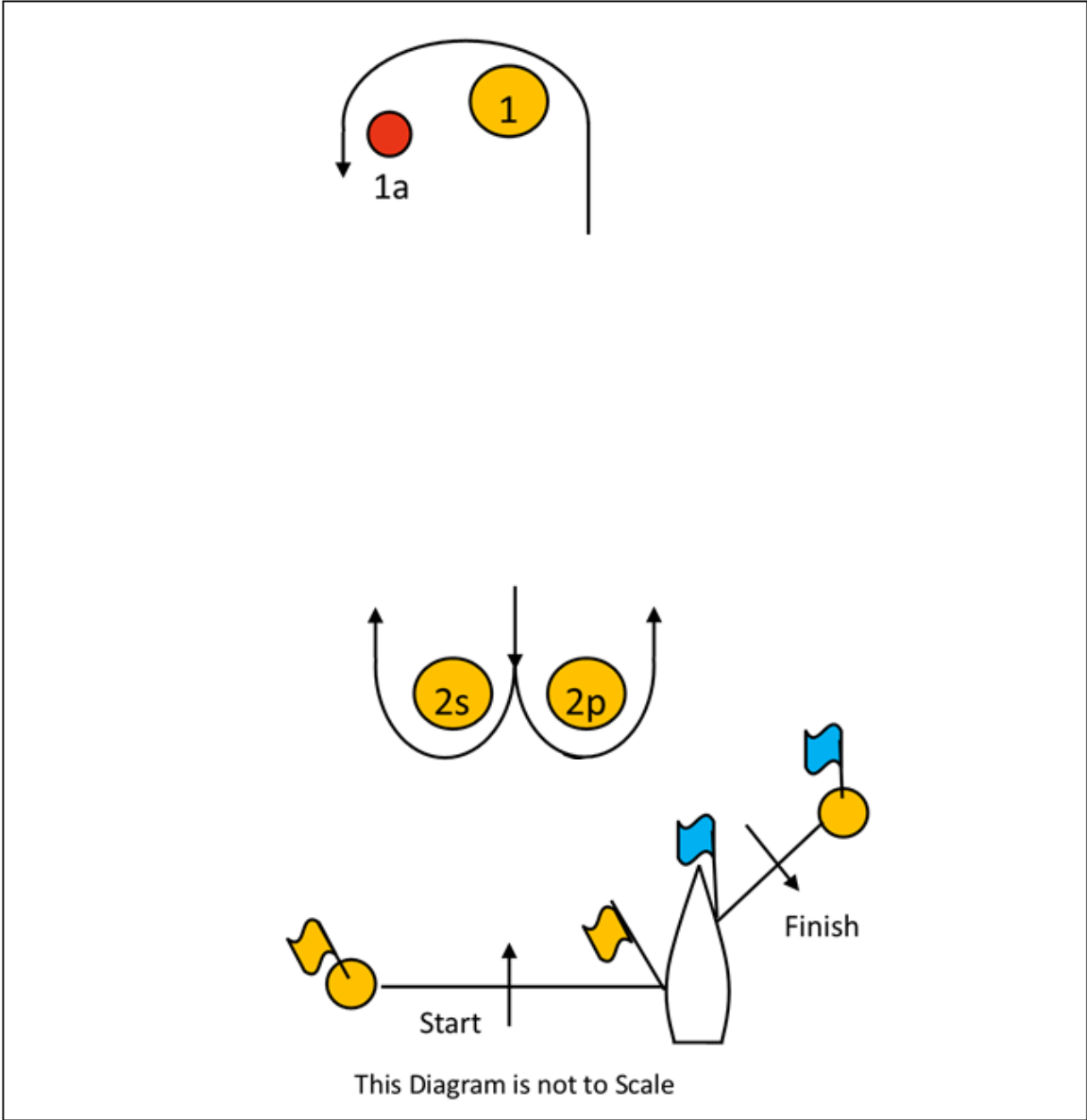
RACING AREA






OBSTRUCTIONS/PROHIBITED AREA



Attachment B – THE COURSES



	SIGNAL	Mark Rounding Order
2		Start - 1 - 1a - 2p/2s - 1 - 1a -Finish
3		Start - 1 - 1a - 2p/2s - 1 - 1a - 2p/2s - 1 - 1a -Finish
4		Start - 1 - 1a - 2p/2s - 1 - 1a - 2p/2s - 1 - 1a 2p/2s - 1 - 1a -Finish